

For Windows only

Supported products

TD-01 Portable

Recommended hardware

PC with Intel Core 2 Duo or faster processor and 1 GB or more memory

Supported operating systems

Windows 7 SP1 (32-bit and 64-bit editions)
Windows 8.1 (32-bit and 64-bit editions)
Windows 10 (32-bit and 64-bit editions)
as of November, 2016

Precautions before installation
Install TdDataPicker before connecting the computer by USB.

Microsoft, Windows and Windows Media are either registered trademarks or trademarks of Microsoft Corporation in the United States and/or other countries.

Other company names and product names in this document are the trademarks or registered trademarks of their respective owners.

END USER LICENSE AGREEMENT

IMPORTANT:

PLEASE CAREFULLY READ THE LICENSE AGREEMENT HEREIN BEFORE USING THE SOFTWARE.

THE RIGHT TO USE THE SOFTWARE IS GRANTED ONLY ON THE CONDITION THAT YOU AGREE TO THE LICENSE AGREEMENT. IN CASE YOU DO NOT AGREE TO THE LICENSE AGREEMENT, DO NOT INSTALL THE SOFTWARE. IF YOU HAVE ALREADY INSTALLED THE SOFTWARE, STOP THE USE AND UNINSTALL THE SOFTWARE. UNAUTHORIZED REPRODUCTION OR DISTRIBUTION OF THE SOFTWARE, OR ANY PORTION OF IT, MAY RESULT IN SEVERE CIVIL AND CRIMINAL PENALTIES, AND WILL BE PROSECUTED TO THE MAXIMUM EXTENT POSSIBLE UNDER LAW.

This License Agreement with limited warranty is a legal agreement between you (either an individual or a single entity) and TEAC Corporation ("TEAC") for the SOFTWARE, which include computer software and electronic documentation.

1. GRANT OF LICENSE.

TEAC grants to you the right to use the SOFTWARE only in combination with the respective TEAC products.

2. COPYRIGHT/TRADENAME.

All title and copyrights in and to the SOFTWARE and any copies thereof are owned by TEAC or a supplier to TEAC. The SOFTWARE is protected by Japanese copyright law, international treaty provisions, and all other applicable national laws. Furthermore, you shall acknowledge that some logos and/or marks collected in the SOFTWARE might be trademarks of third parties and protected under the applicable laws. When you use such logo or mark as a

trademark, you shall get a license from the respective owner on your own responsibility. TEAC does not assume any liability for and from your use thereof.

3. RESTRICTIONS.

You may not distribute copies of the SOFTWARE to third parties. You may not reverse engineer, decompile, or disassemble the SOFTWARE, except and only to the extent that applicable law notwithstanding this limitation expressly permits such activity. You may not rent or lease the SOFTWARE. You may not reproduce the SOFTWARE except for archival purpose.

4. TERMINATION.

Your rights under this Agreement terminate upon the disposal of all copies of the SOFTWARE, or without prejudice to any other rights, TEAC may terminate this Agreement if you fail to comply with the terms and conditions of this Agreement. In such event, you must destroy all copies of the SOFTWARE.

5. LIMITED WARRANTY.

TEAC warrants that the SOFTWARE will be usable for the purpose expressed on TEAC's document when properly installed on computer. TEAC does not warrant that the operation of the SOFTWARE will be uninterrupted or error free, and that the SOFTWARE fits for any particular purpose.

6. NO LIABILITY FOR CONSEQUENTIAL DAMAGES.

TO THE MAXIMUM EXTENT PERMITTED BY APPLICABLE LAW, IN NO EVENT SHALL TEAC BE LIABLE FOR ANY SPECIAL INCIDENTAL, INDIRECT, OR CONSEQUENTIAL DAMAGES WHATSOEVER (INCLUDING, WITHOUT LIMITATION, DAMAGES FOR LOSS OF BUSINESS PROFITS, BUSINESS INTERRUPTION, LOSS OF BUSINESS INFORMATION, OR ANY OTHER PECUNIARY LOSS) ARISING OUT OF THE USE OF OR INABILITY TO USE THE SOFTWARE, EVEN IF TEAC HAS BEEN ADVISED OF THE POSSIBILITY OF SUCH DAMAGES. BECAUSE SOME STATES AND JURISDICTIONS DO NOT ALLOW THE EXCLUSION OR LIMITATION OF LIABILITY FOR CONSEQUENTIAL OR INCIDENTAL DAMAGES, THE ABOVE LIMITATION MAY NOT APPLY TO YOU.

7. MISCELLANEOUS.

This Agreement is governed by the laws of Japan.

Should you have any questions concerning this Agreement, or if you desire to contact TEAC for any reason, please write to the address set forth below:

TEAC CORPORATION
Ochiai 1-47, Tama-shi, Tokyo 206-8530, Japan
Internet Web site: <http://www.teac.co.jp>

TdDataPicker installation procedures

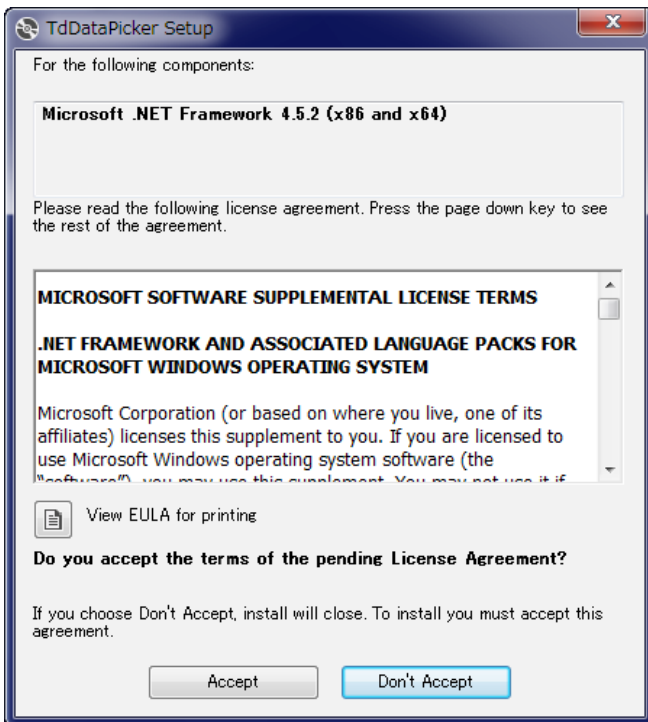
NOTE

The following screen examples are from Windows 7.

1 Double-click the Td01Setup.exe file to open the installation wizard.

NOTE

This software uses .Net Framework version 4.5.2 or a newer. If .Net Framework 4.5.2 or a newer version is not installed, the following window will appear.



When the computer is connected to the Internet, follow the instructions in the window and install .Net Framework.

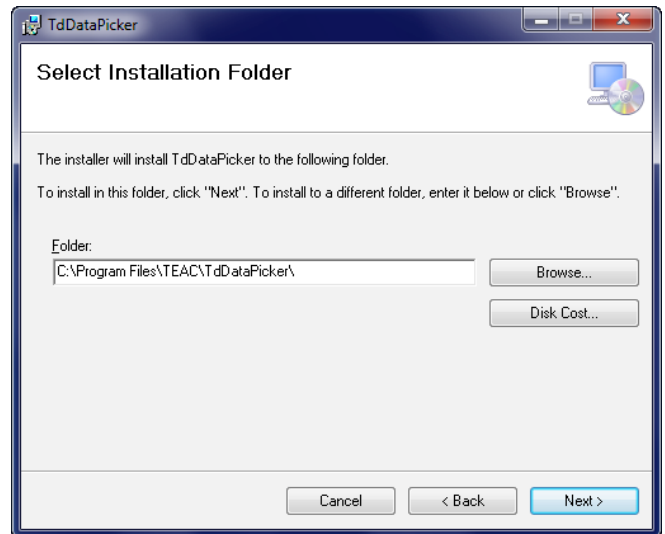
- If the computer is not connected to the Internet, install .Net Framework 4.5.2 in another way.

2 Click "Next".

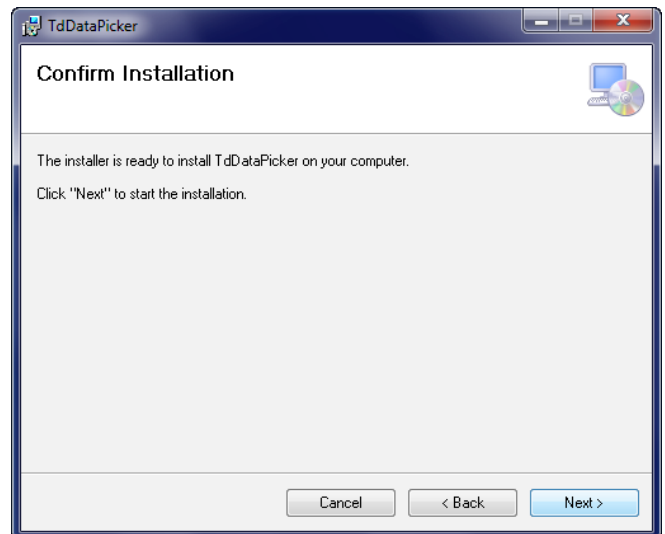


3 Confirm the installation folder, and click "Next".

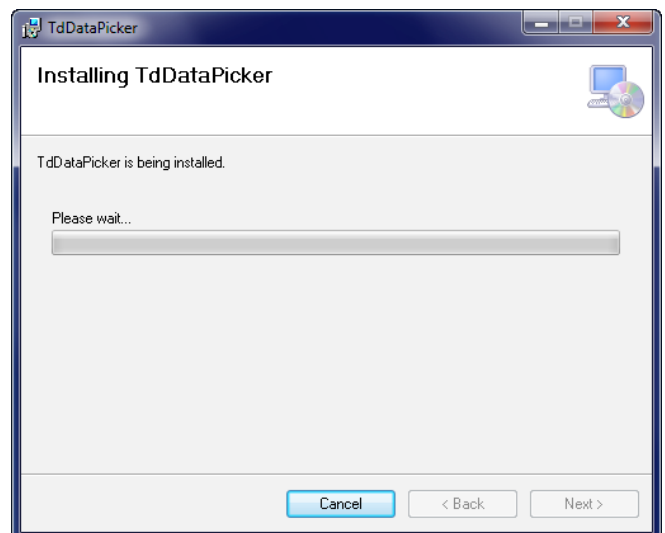
Click "Browse" to change the installation folder.

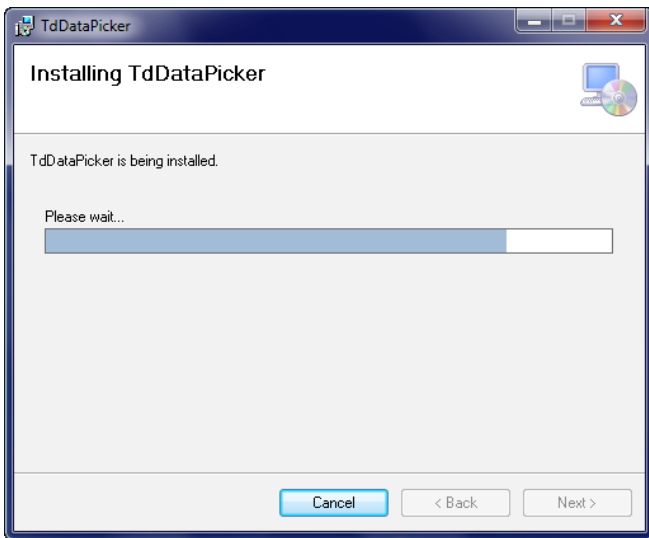


4 Click "Next".

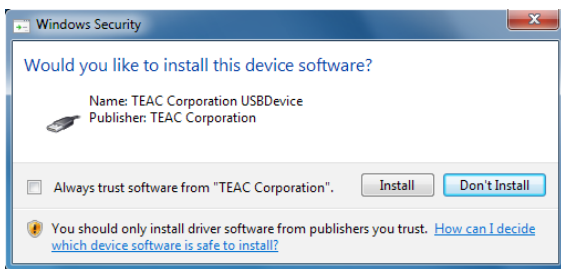


5 Click "Next".

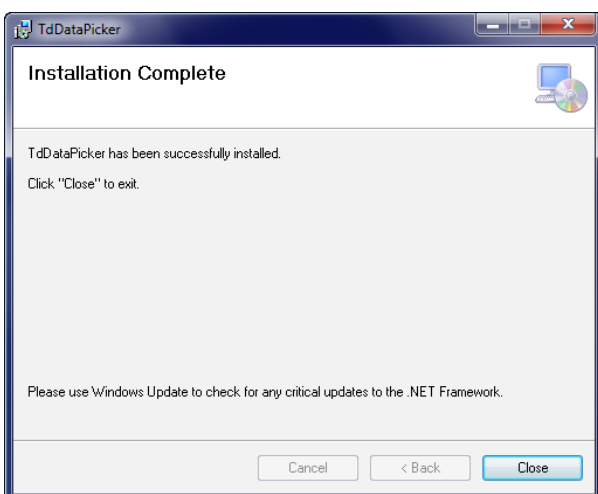




6 If a Windows security pop-up message appears during installation, click “Install” or “Continue Anyway”.

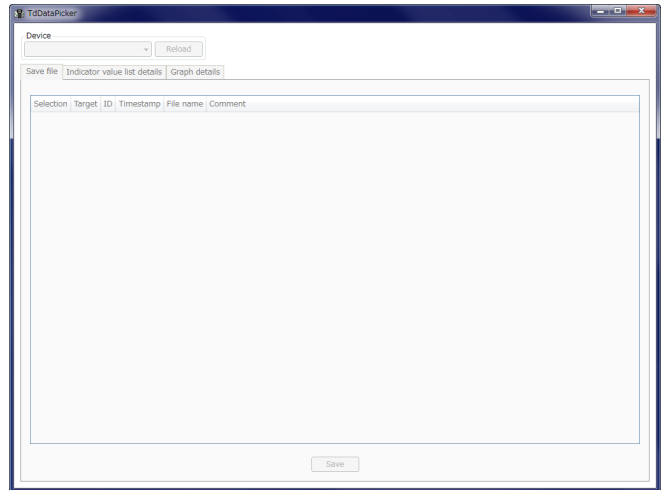


7 When the installation completion screen appears, click “Close” to finish the installation.



Basic operation

1 Launch TdDataPicker.

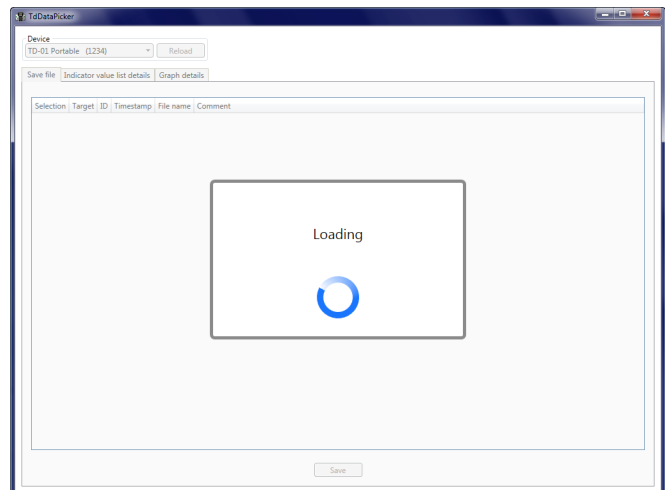


- If a TD-01 Portable is already connected, the screen in the next step will open automatically.

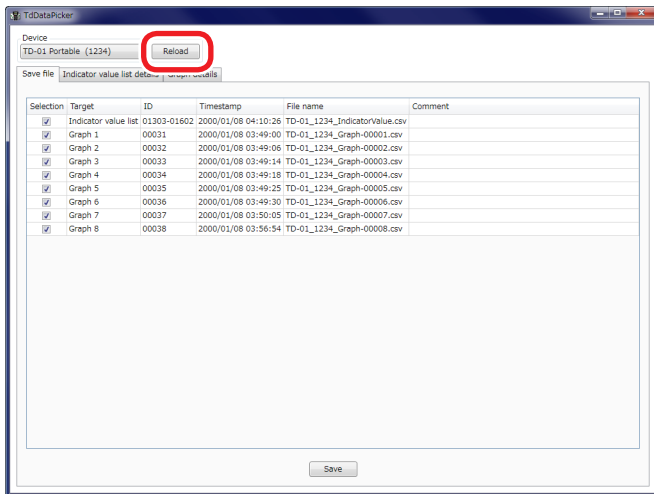
2 Use a USB cable to connect the TD-01 Portable to the computer.

When the computer recognizes the TD-01 Portable, the computer will automatically load the data saved on the TD-01 Portable.

- Do not disconnect the TD-01 Portable while data is being loaded.



When data loading completes, the following screen will open.



- To load the data on the TD-01 Portable again, click the "Reload" button.
- Do not disconnect a TD-01 that has its data shown while the application is running.

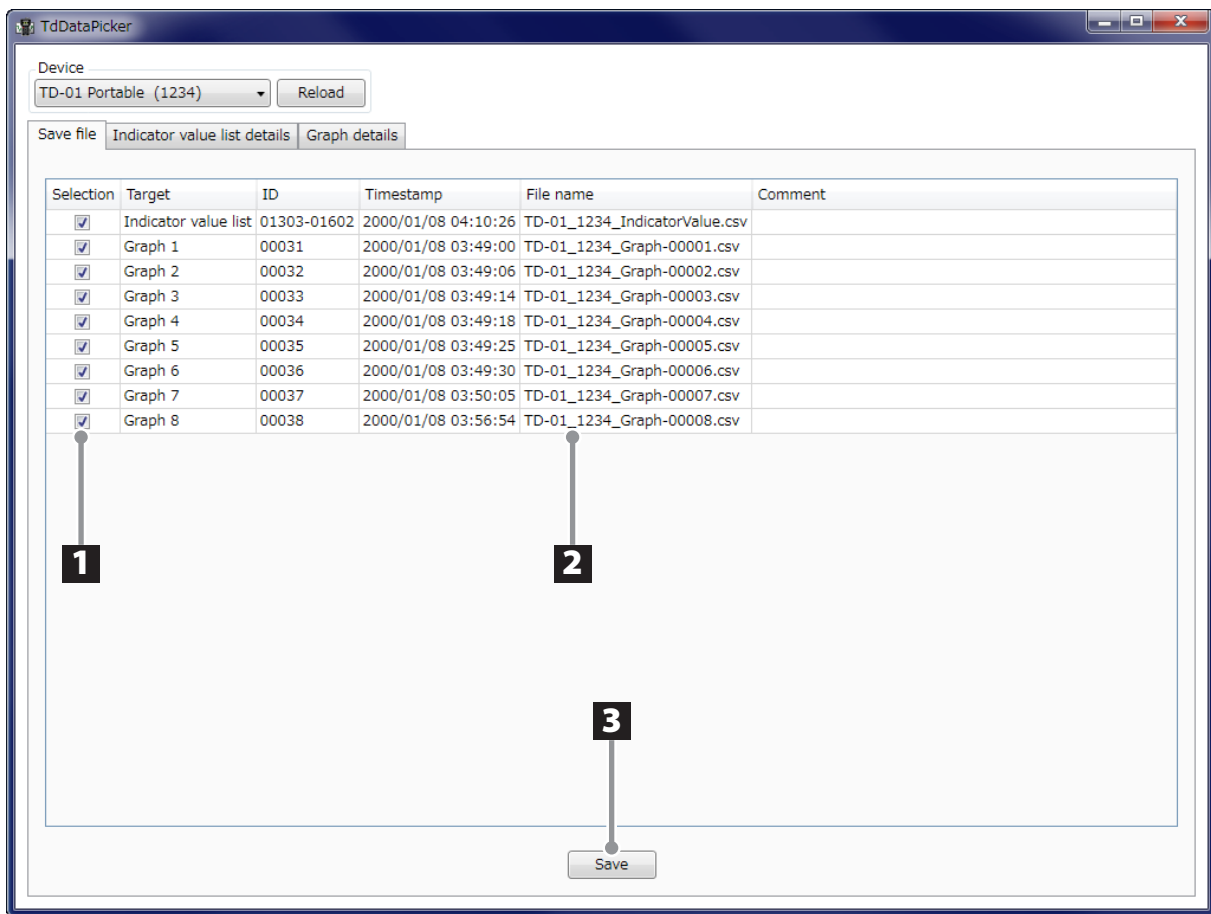
Connecting multiple TD-01 Portable units to the same computer

You can distinguish the units by the device numbers that appear in parentheses after the TD-01 Portable device name.

- Set the device numbers in advance on the TD-01 Portable units themselves.

3 Select the "Save file", "Indicator value list details" or "Graph details" tab to save or show data.

The following sections explain the use of the tabs.



Saving files

The measurement data saved on a TD-01 Portable can be saved on the computer in CSV format.

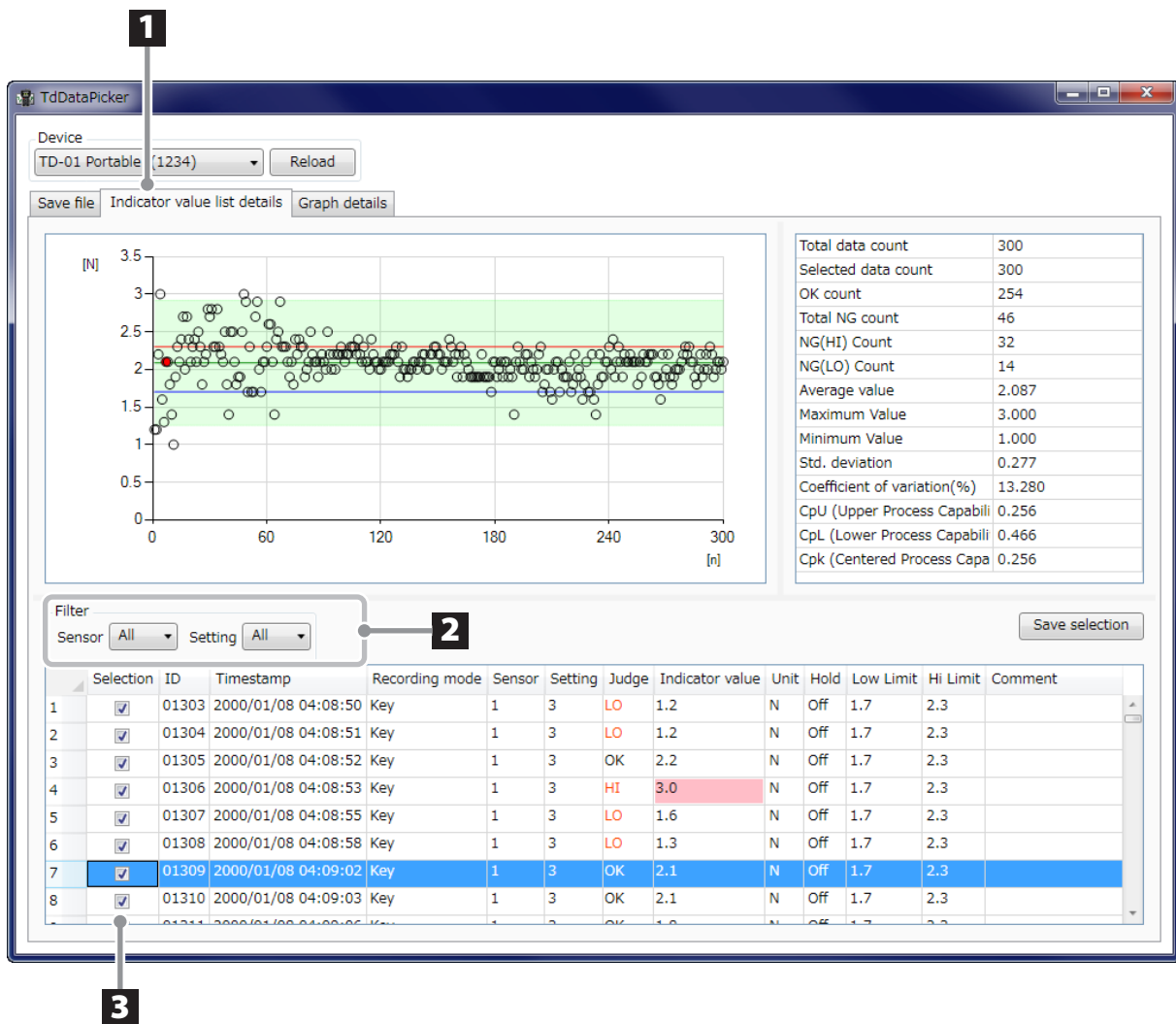
1 Put check marks into the Selection column for the data you want to save.

2 Change the saved file names as necessary.

- Default file names are automatically generated.

3 Click the save button to save the data.

- UTF-8 with BOM (Byte Order Mark) is used for the character code.
- All the data in the indicator value list will be output as a single file. If you only want to output selected data to a file, see "Indicator value list details view" on page 6.
- A separate file is created for each data graph.



Indicator value list details view

You can check the indicator value list data saved on a TD-01 Portable.

1 Select the "Indicator value list details" tab.

2 Select the sensor and setting number to show in the graph.

Select "All" to show all data.

3 Put check marks into the Selection column for the data you want to plot.

- Click the "Save selection" button at the top right of the table to save only the selected data as CSV data.

Graph explanation

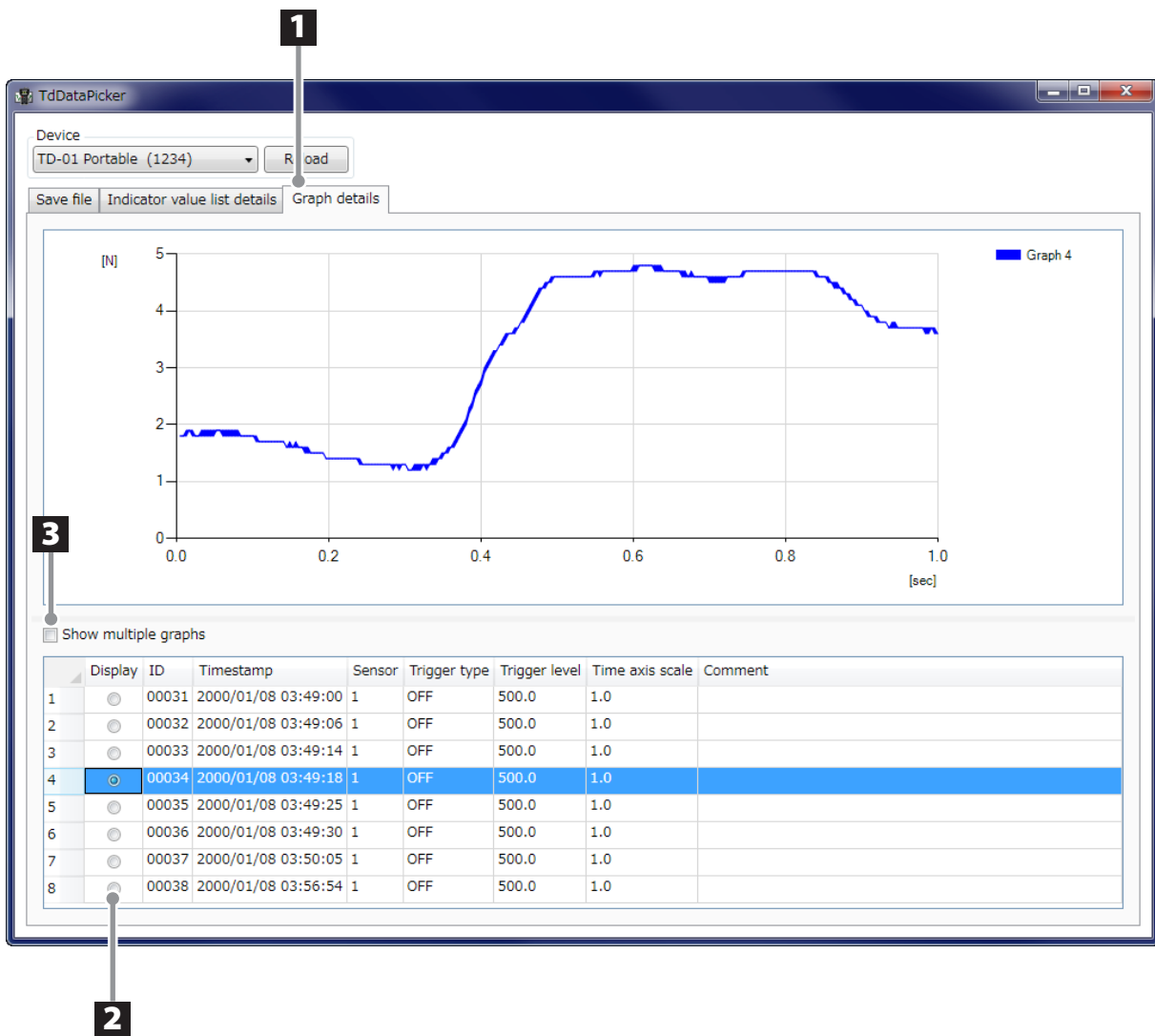
- The vertical axis is automatically generated.
- The horizontal axis (n) is the selected data number.
- High limit and low limit lines are drawn on the graph. However, if there are different high limits and low limits within the selected data, lines will not be drawn.
- Click on a plot point (O) to highlight the corresponding data in the graph.
- The range that corresponds to 3σ is shown in light green.

Table explanation

- The table can be sorted by each item. Click the item that you want to use for sorting.
- Click a data line in the table to make the corresponding plot point (O) appear red.

Statistical calculations

- The selected data is used for the calculations



Graph details

You can show the data graphs saved on a TD-01 Portable.

1 Select the "Graph details" tab.

- By default, the first data graph is shown.

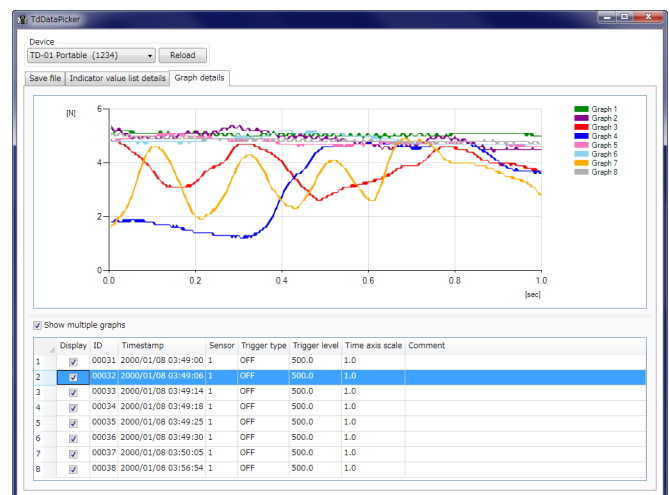
2 Put check marks for the data you want to show.

The data that has been marked with a check will be shown.

3 To show multiple graphs, put a check in the "Show multiple graphs" checkbox.

This will enable the selection of multiple items, and the data graphs that have been marked with a check will be shown layered.

- You cannot put a check mark by data that has a different time axis setting than graphed data that is already marked with a check.



Notice Regarding Third-party Software

This product includes the following software that TEAC Corporation has received permission to use from third parties either directly or indirectly.

ReactiveProperty

The MIT License (MIT)

Copyright (c) 2016 neuicc, xin9le, okazuki

Permission is hereby granted, free of charge, to any person obtaining a copy of this software and associated documentation files (the "Software"), to deal in the Software without restriction, including without limitation the rights to use, copy, modify, merge, publish, distribute, sublicense, and/or sell copies of the Software, and to permit persons to whom the Software is furnished to do so, subject to the following conditions:

The above copyright notice and this permission notice shall be included in all copies or substantial portions of the Software.

THE SOFTWARE IS PROVIDED "AS IS", WITHOUT WARRANTY OF ANY KIND, EXPRESS OR IMPLIED, INCLUDING BUT NOT LIMITED TO THE WARRANTIES OF MERCHANTABILITY, FITNESS FOR A PARTICULAR PURPOSE AND NONINFRINGEMENT. IN NO EVENT SHALL THE AUTHORS OR COPYRIGHT HOLDERS BE LIABLE FOR ANY CLAIM, DAMAGES OR OTHER LIABILITY, WHETHER IN AN ACTION OF CONTRACT, TORT OR OTHERWISE, ARISING FROM, OUT OF OR IN CONNECTION WITH THE SOFTWARE OR THE USE OR OTHER DEALINGS IN THE SOFTWARE.